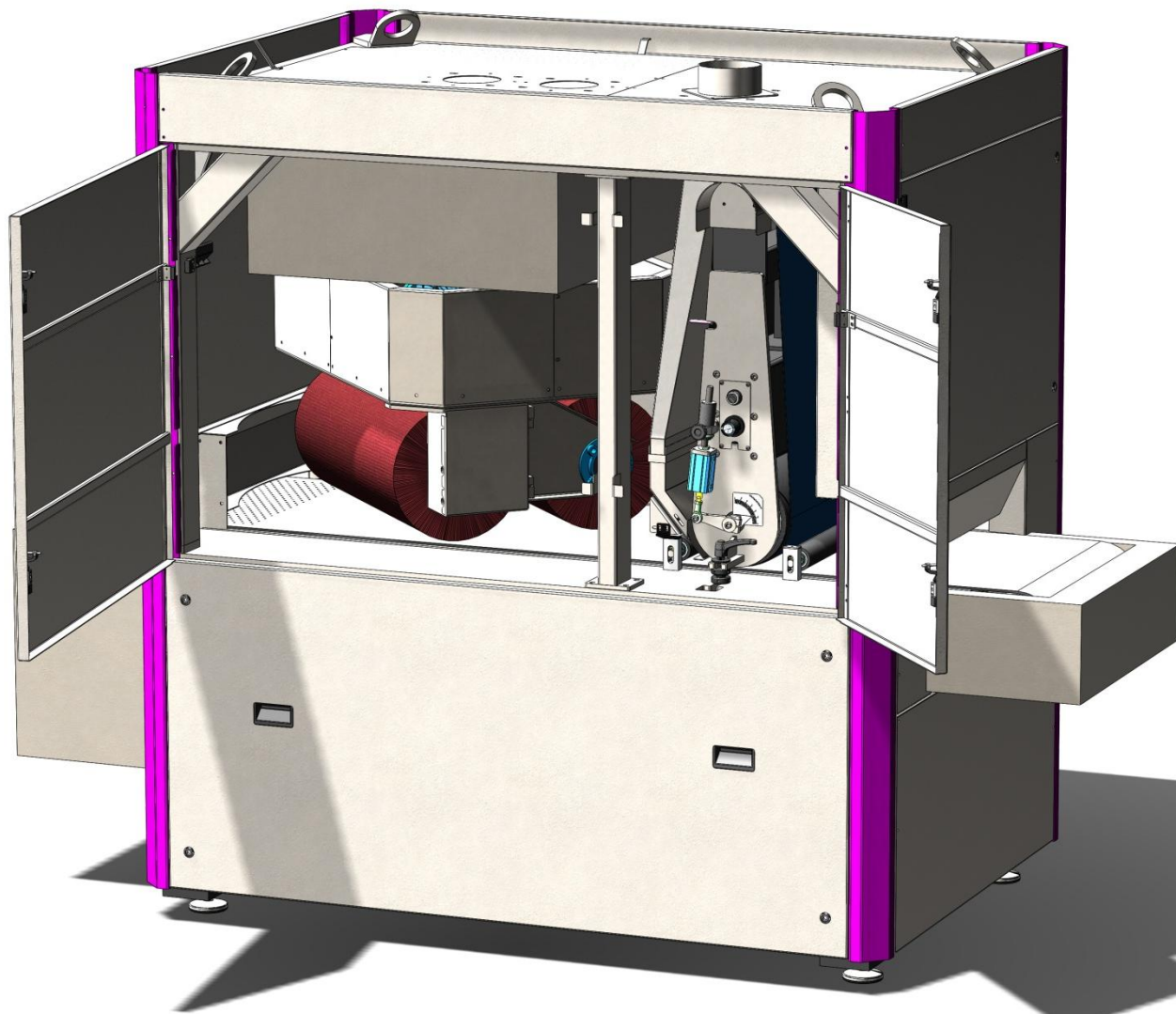


EDGE ROUNDING PLANETARY MACHINE



FINISHING AND EDGES ROUNDING OF SMALL PARTS

DM660 ZPK is the solution for deburring and finishing uniformly flat or bended pieces.

Unique performance on thin material, parts with reduced dimensions and small holes.

The contact roller removes the heavier burrs while the double rotation planetary head rounds consistently internal and external edges.



BENEFITS



- > Small and thin parts edge rounding*
- > Uniformity and consistency of work through all internal and external edges*
- > Maximum and controllable edge radius*
- > Flat and bended or shaped parts deburring*
- > Random or hairline finish*
- > Different combinations of size and belt/brush*

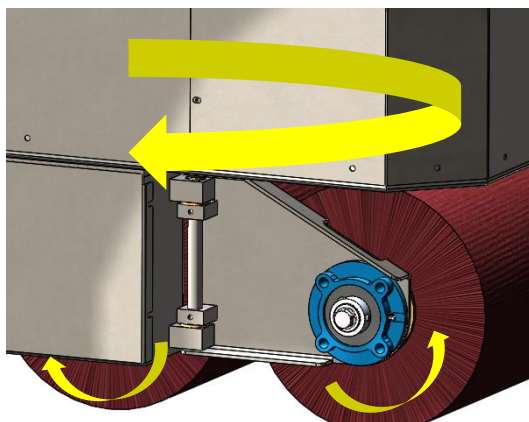
TECHNOLOGY



CONTACT ROLLER HEAD (Z)

*Deburring of higher
burrs*

Surface finishing



PLANETARY HEAD (PK)

*Double rotation movement:
Carrousel and brushes*

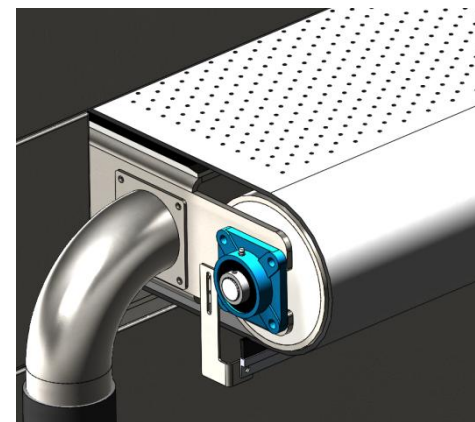
Consistency in all surface



ABRASIVE BRUSHES

Small holes edge rounding

*Flexibility in flat or shaped
parts*



VACUUM CONVEYOR

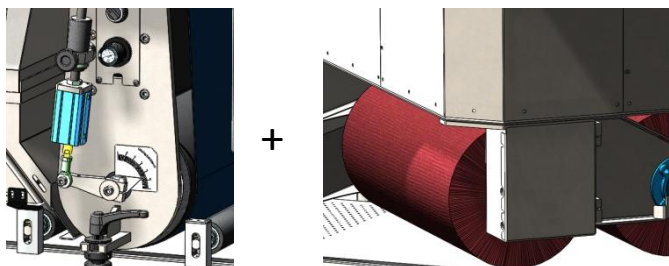
*Transport belt with high
adherence*

*Vacuum system to hold small
and thin parts*

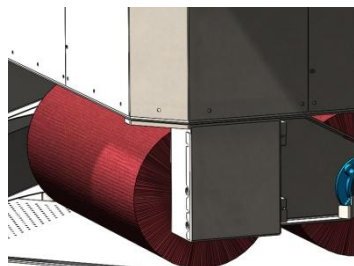
DIFFERENT COMBINATIONS



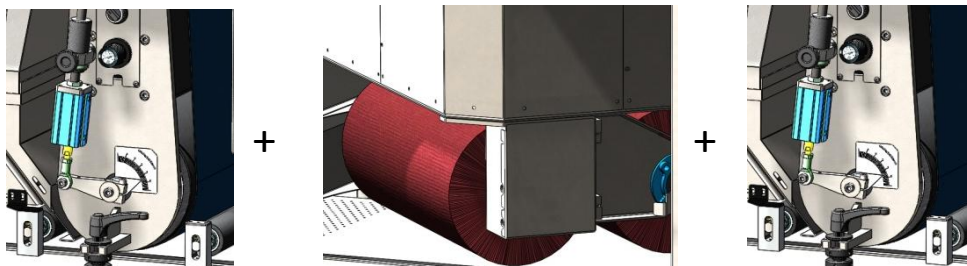
ZPK



PK



ZPKZ



*First large contact roller for
higher burrs deburring*

*Double rotation planetary brush
head for edge rounding*

*Second large contact roller for
surface finishing*

TECHNICAL DATA



Min. – max. thickness	0 - 120mm
Max. width	660mm
Min. dimension part	50x50mm*
Abrasive dimensions	660x2200mm (belt) 2x 750xØ350mm (brushes)
Total power	11 + 5 + 5.5 Abrasive belt + Planetary brushes + Vacuum
Linear speed of brush	Variable up to 24m/s
Feeding speed	0.5– 13 m/m

